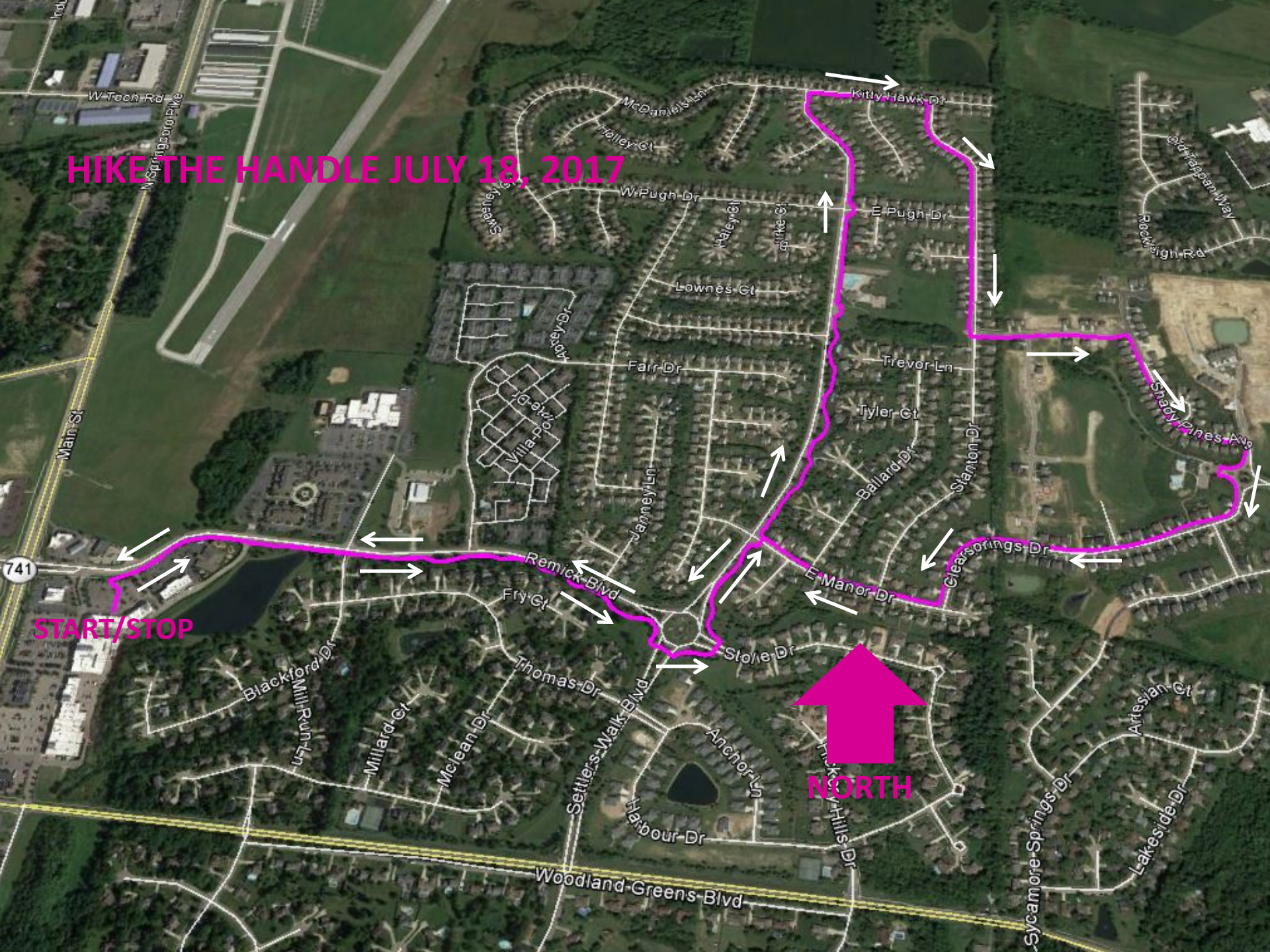


HIKE THE HANDLE JULY 18, 2017



START/STOP

NORTH

Hike the Handle Cue Sheet July 18, 2017

Cue	Distance (mi)
Exit Crooked Handle parking lot, walk towards Remick Boulevard	0.0
Turn right at Remick Boulevard, continuing on footpath	<0.1
At roundabout continue north Settlers Walk Boulevard on east side of road	0.70
Turn right at Kittyhawk Drive	1.60
Turn right at Stanton Drive	1.75
Turn left at Banyon Lane	2.15
Turn right at Shady Pines Drive	2.30
Turn right at Waterside Drive	2.50
Continue through roundabout to Clearsprings Drive	2.55
Turn right at East Manor Drive	3.00
Turn left at Settlers Walk Boulevard	3.20
At roundabout continue east on Remick Boulevard on south side of road	3.35
Turn left at parking lot at brewery	4.05
End at Crooked Handle Brewing Company	4.10

Total Climb: 209 feet Maximum Slope: 9.2percent

High point: Settlers Walk pool at 1.25 miles, 1004 feet

Low point: Crooked Handle Brewing Company Foliage at start and finish, 909 feet